



# NSAC industry experience with MSP and potential for improvements in stakeholder involvement

## Danish perspective

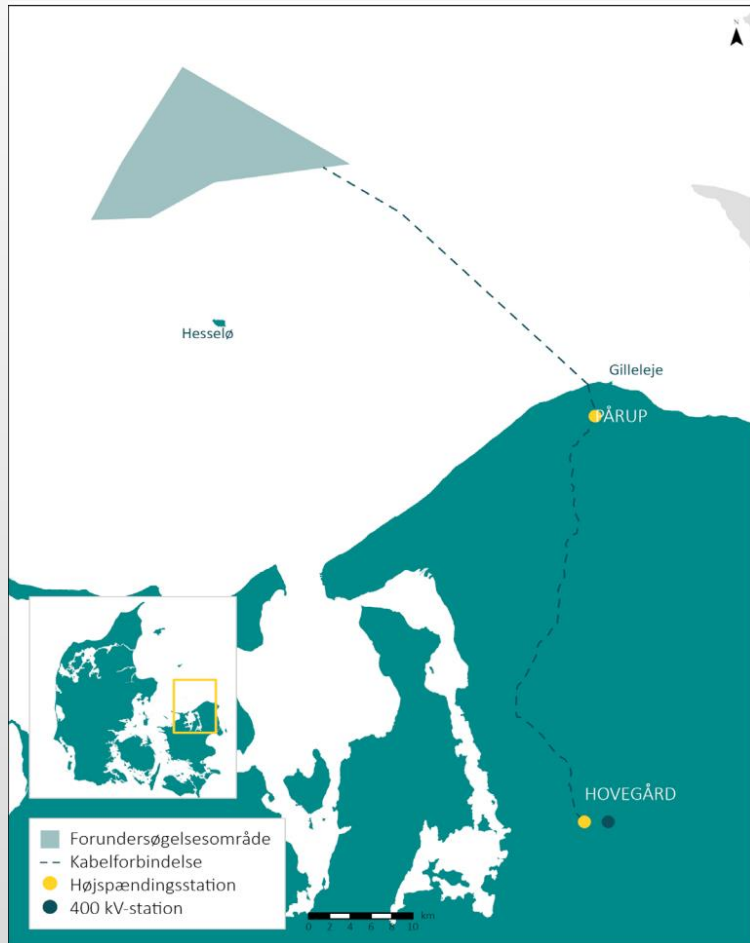
Henrik S. Lund, Teamleader, Biologist, Fisherman

4. maj 2023

# Case Study

## Hesselø windfarm

### Proces 2018-2023

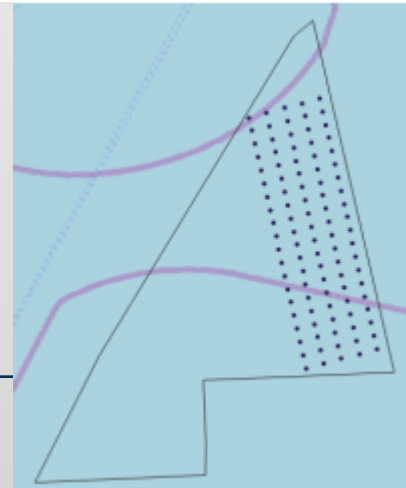
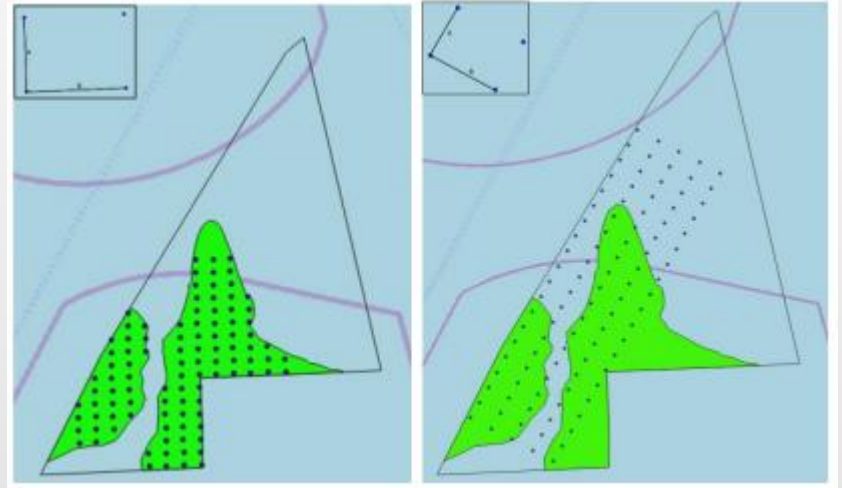
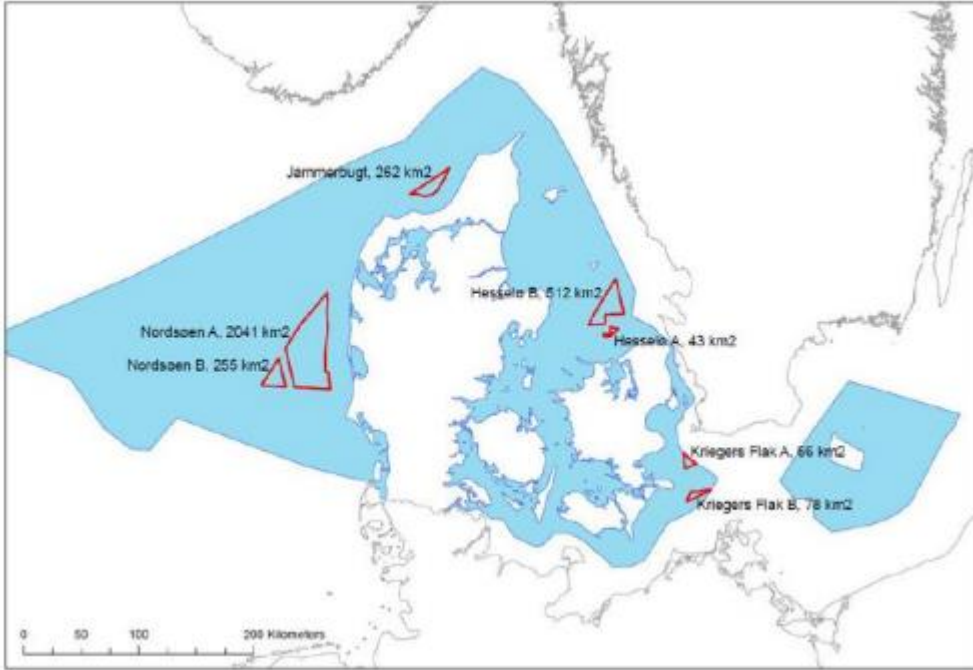


- First offshore windfarm in Danish waters in 1991

4. maj 2023

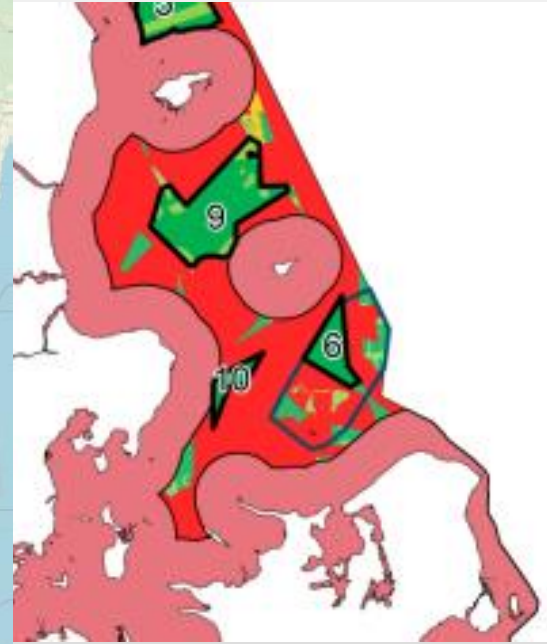
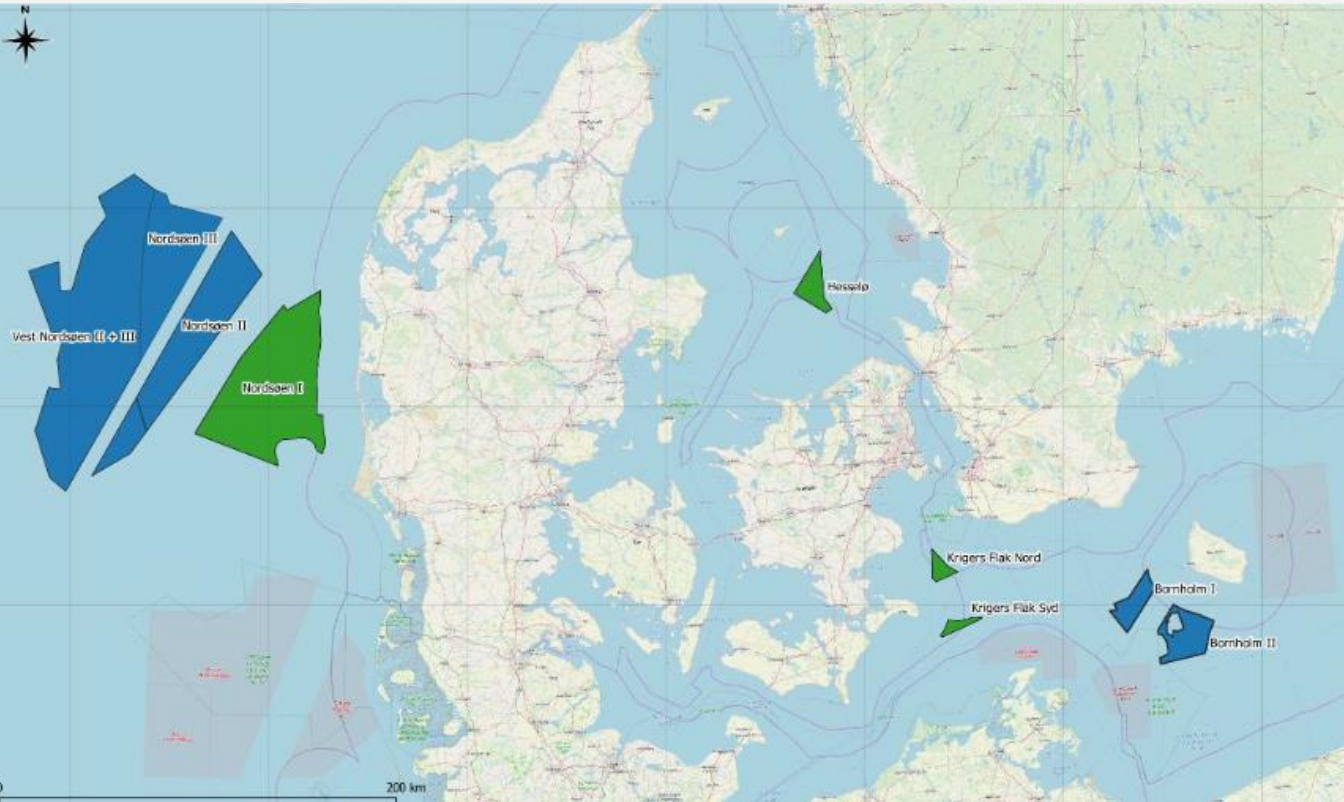
# SCREENING OF SEA AREAS TO ESTABLISHMENT OF NEW WIND FARMS

COWI Dec. 2018



4. maj 2023

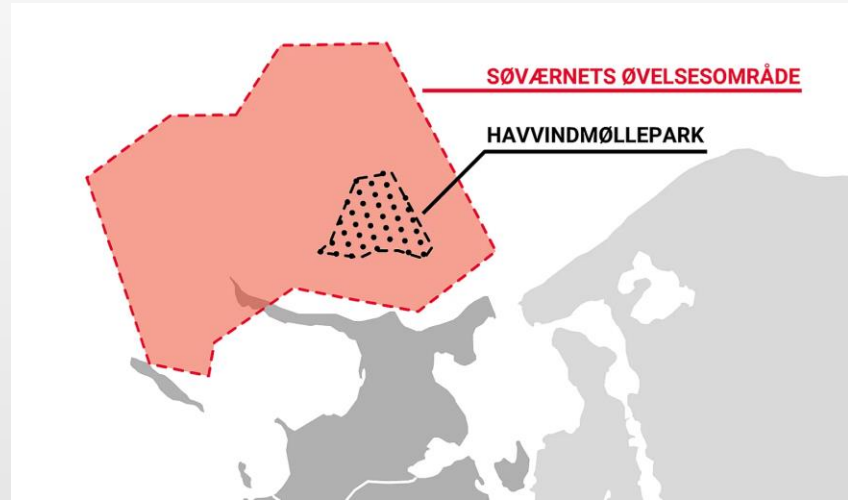
# NEW SCREENING OF SEA AREAS. COWI 2020



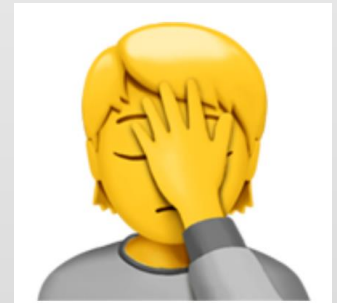
4. maj 2023

## SCREENING OF SEA AREAS

- wind occurrence
- water depth
- shipping corridors
- extraction of raw materials
- military area \*\*\*
- nature conservation areas
- electricity infrastructure on land



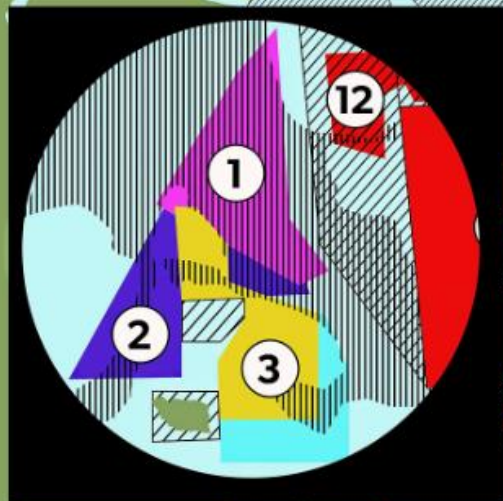
Commercial fishing – You can just move to another area to fish!



4. maj 2023

VMS-data for  
jomfruummerfiskeri  
sammen med Hessele

Der er meget fiskeri i den nuværende  
placering af parken (1), men hvis man  
rykkede den mod syd, som oprindeligt  
(2) eller som fiskerne foreslår (3),  
ville mallerne genere mindre.



## RIFT OM PLADSEN I KATTEGAT

- 1 Nuværende placering af Havvindmølleparken Hessele
- 2 Oprindelig placering af Hessele
- 3 Fiskernes forslag til Hessele

**Torskelukninger i Kattegat**  
4 er lukket året rundt for slæbende redskaber, mens 5 og 6 er lukket i perioder for at beskytte gydende torsk

Svenske Natura2000-områder, der ønskes lukket for fiskeri med slæbende redskaber. Ca. 50 pct. af områderne ønskes lukket for alt fiskeri

Havstrategi-områder, hvor slæbende redskaber ønskes reguleret. Områderne er i proces, og regulering træder højst sandsynligt i kraft i 2021

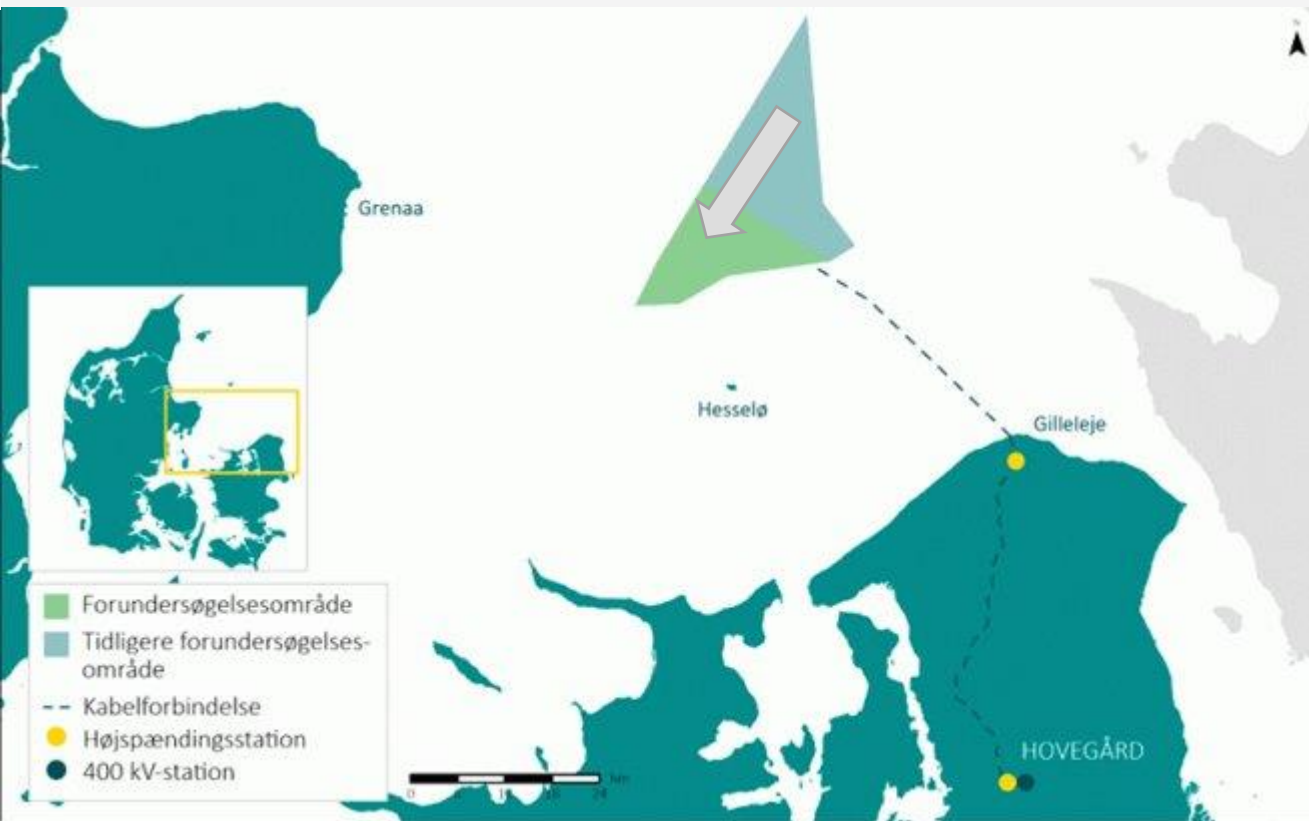
Stenrev, hvor fiskeri med slæbende redskaber er forbudt

Natura2000-områder, hvor fx stenrev beskyttes

Vindmøllerne viser to svenske forslag til havvindmølleparker, samt Anholt Havvindmøllepark

3 mil-grænsen for, hvor tæt på kysten trawlfartøjer må fiske

4. maj 2022



The area was moved back!

Fishermen work?

Soft mud seabed?

preliminary investigations  
\$\$\$\$\$\$

4. maj 2023

# Real Stakeholder Involvement

Economical and ecological sustainable

- All factors must be included in the analyses also the fishery
- Informed basis – Political decision
- Remember cumulative effects
  
- Involve fishermen as early as possible in the process (the first screening!)
- Always scientific dokumentation
  
- Real Bottom up approach
  
- Ensure Coexistence – Ensure intelligent decisions

4. maj 2023



Thank You

4. maj 2023

